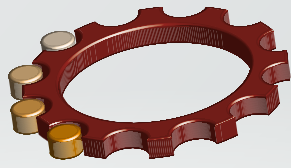


COS.MA.R.

Aerosol & Perfumery Machine
Manufacturing & Maintenance

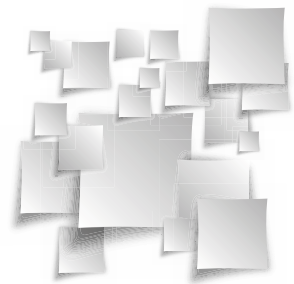




COS.MA.R.
Aerosol & Perfumery Machine
Manufacturing & Maintenance

COS.MA.R. has specialized for more than 30 years in the design and manufacture of aerosol filling machinery. Our product range includes semi-automatic machines for small scale production and also fully automatic lines.

COS.MA.R. machines are designed to meet latest European Standards for mechanical and electrical compliancy. They are manufactured to customer`s exact requirements, and offer increased safety, high flexibility and reliability.



COS.MA.R.





AEROSOL FILLING MACHINE MODEL MR

This machine is an indexing rotary crimping & filling machine intended for the filling of rigid containers for aerosol.

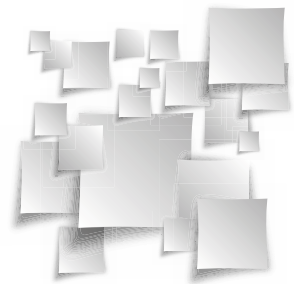
The machine body consists of a frame and crankcases made of AISI 304 stainless steel. Inside the crankcases, there are the indexing electrical motor drive and the pneumatic system, which move the star wheel and the operating units.

It features 12-20 position rotating star wheel, that can support cans with a maximum diameter of 66mm. On the baseplate of the machine, there are fixed columns with adjustable supports, on which the operating units are housed.

There are protective transparent panels that surround all the moving parts that may be dangerous to the operators.

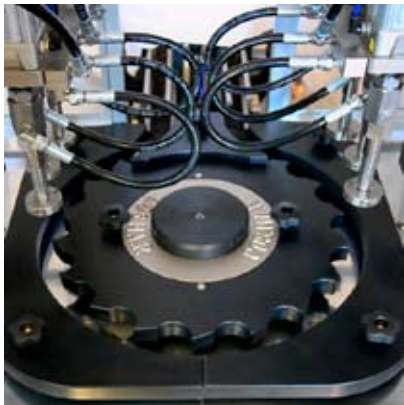
If a door opens the machine stops.

The machine is designed and manufactured to be extremely versatile, as well as extremely reliable and safe.



MR up to 50cpm

MR-M up to 80cpm





AEROSOL GASSING MACHINE MODEL MG

This machine is an indexing rotary gassing machine intended for the pressurization of rigid containers for aerosol.

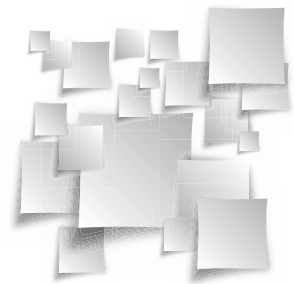
The machine body consists of a frame and crankcases made of AISI 304 stainless steel. Inside the crankcases, there are the indexing electrical motor drive and the pneumatic system, which move the star wheel and the operating units.

It features 12-20 position rotating star wheel, that can support cans with a maximum diameter of 66mm. On the baseplate of the machine, there are fixed columns with adjustable supports, on which the operating units are housed.

There are protective transparent panels that surround all the moving parts that may be dangerous to the operators.

If a door opens the machine stops.

The machine is designed and manufactured to be extremely versatile, as well as extremely reliable and safe.



MG up to 50cpm

MG-M up to 120cpm

COS.MA.R.





BOV FILLING MACHINE MODEL MBP-E

This machine is a double indexing rotary gassing, crimping & filling product machine intended for the pressurization of rigid containers for aerosol.

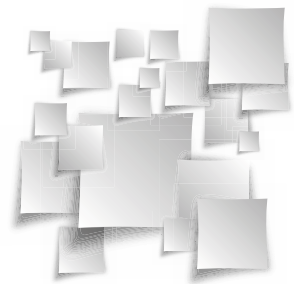
It is meant to be used for bag on valve (BOV) production.

The machine body consists of a frame and crankcase made of AISI 304 stainless steel panels. Inside the guarding, there are the Brushless electrical motor and the electric-pneumatic system, which move the star wheel and the operating units.

It features 12-20 position rotating star wheel, that can support cans with a maximum diameter of 66mm. On the base plate of the machine, there are fixed columns with manual adjustable supports, on which the operating units are housed.

There are transparent doors that surround all the moving parts that may be dangerous to the operators. If a door opens the machine stops. Thanks to a Touch-Screen, it is possible to change the speed of the machine and arrange the setup of the devices installed. Depending on the setup, the machine can run single indexing or double indexing.

The machine is designed and manufactured to be extremely versatile, as well as extremely reliable and safe.



MBP-DLE up to 50cpm





ACTUATOR PLACING MACHINE MODEL MT



This machine is an indexing rotary machine intended for the placing of standard full finger actuator on the containers for aerosol already crimped.

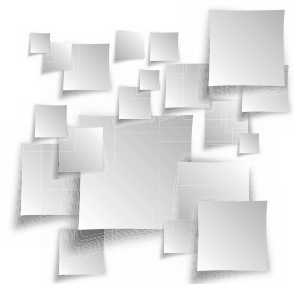
The machine body consists of a frame and crankcases made of AISI 304 stainless steel. Inside the crankcases, there are the indexing electrical motor drive and the pneumatic system, which move the star wheel and the operating units.

It features 12-20 position rotating star wheel, that can support cans with a maximum diameter of 66mm. On the baseplate of the machine, there are fixed columns with adjustable supports, on which the operating units are housed.

There are protective transparent panels that surround all the moving parts that may be dangerous to the operators.

If a door opens the machine stops.

The machine is designed and manufactured to be extremely versatile, as well as extremely reliable and safe.

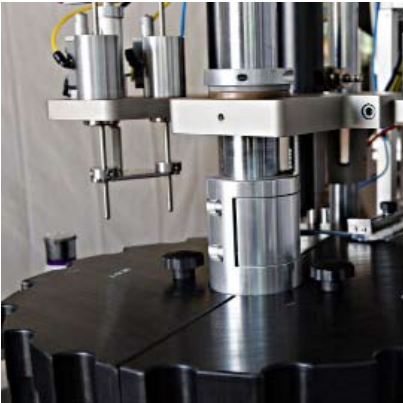


MT-L up to 70cpm

MT-DL up to 120cpm



11





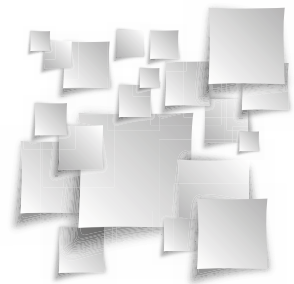
CAP PLACING MACHINE MODEL MC

This machine is an indexing rotary machine intended for the placing of regular caps on the containers for aerosol. The machine body consists of a frame and crankcases made of AISI 304 stainless steel. Inside the crankcases, there are the indexing electrical motor drive and the pneumatic system, which move the star wheel and the operating units.

It features 12-20 position rotating star wheel, that can support cans with a maximum diameter of 66mm. On the base plate of the machine, there are fixed columns with adjustable supports, on which the operating units are housed.

There are protective transparent panels that surround all the moving parts that may be dangerous to the operators. If a door opens the machine stops.

The machine is designed and manufactured to be extremely versatile, as well as extremely reliable and safe.



MC-L up to 70cpm

MC-DL up to 120cpm

DL - FILLING MACHINE MAG-2/400 - CRIMPING & GASSING MACHINE PGL - PNEUMATIC PUMP



This model can work automatically or using a pedal valve

Approximate speed:

400 CPH - Pedal valve

Standard Equipment:

2x300ml product units;

Pedal valve.

Working pressure:

Compressed air: 8-10 bar/Ate.



Semi-Automatics machine for crimping & gassing.

Approximate Speed:

400 CPH

Standard Equipment:

1 crimping valve unit;

1 TTV gassing unit;

Working pressure:

Compressed air: 8-10 bar/Ate.



Pneumatic pump for liquid or liquefied gas.

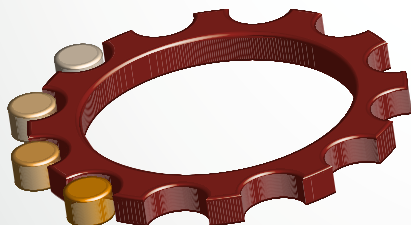
Output characteristic 1:2,5

Standard Equipment:

Body pump in AISI 304 material; Base; 2 high pressure tubes; Air pressure regulator

Working pressure:

Compressed air: 4-6 bar/Ate.



COS.MA.R.

Aerosol & Perfumery Machine
Manufacturing & Maintenance

Via Mattei, 14 - 20010 Pogliano Mil.se (Mi) - Italy
Tel. +039.02.93.03.209 - Fax +039.02.93.02.624
info@cosmar.eu - www.cosmar.eu