

# RENAISSANCE I

*andante*

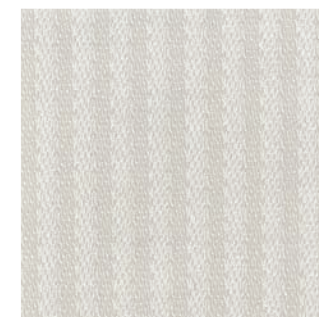
## GEOMETRICS COLLECTION



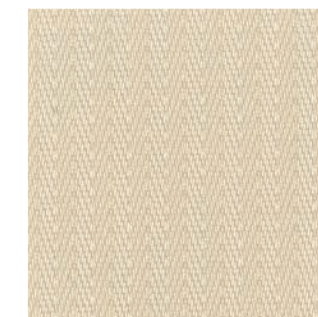
SA-642 EVERGREEN



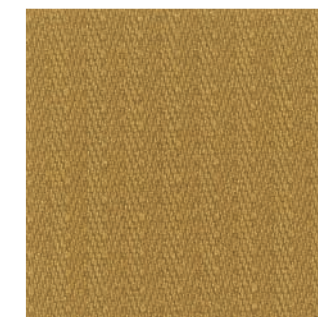
SA-601 WHITE



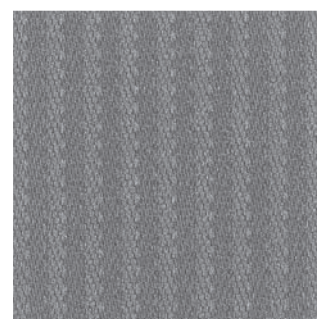
SA-602 DOVER



SA-611 SILK



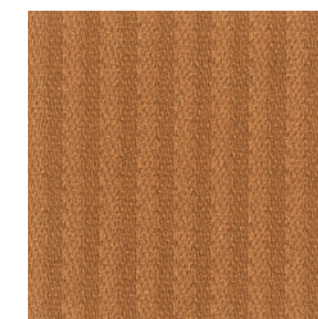
SA-612 HARVEST



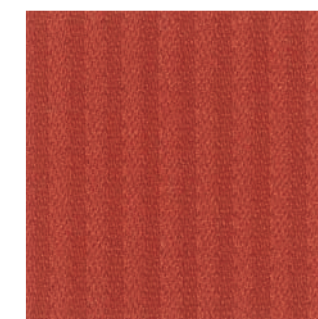
SA-651 HAZE



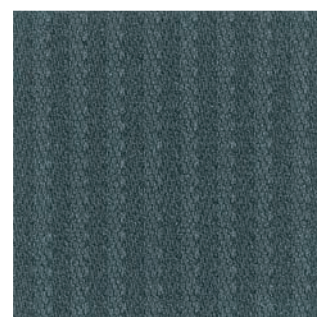
SA-613 AMARILLO



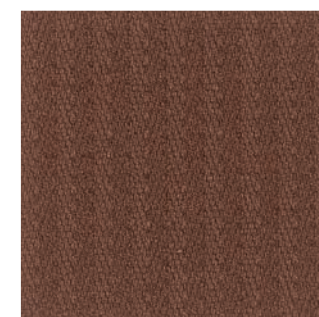
SA-621 SAFFRON



SA-622 PEACH ROSE



SA-652 SEAL



SA-631 MINK



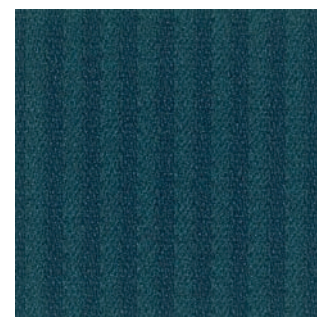
SA-632 CHOCOLATE



SA-691 BLACK



SA-681 ROYAL



SA-682 OCEANIC



SA-683 CLIPPER



SA-641 PASTURE



SA-643 BASIL



SA-644 EMERALD

Printed colors shown are extremely accurate to the actual colors however please request a memo sample to ensure satisfaction.



*andante*

RENAISSANCE I

nature friendly, naturally soft

RENAISSANCE I

*andante*

GEOMETRICS COLLECTION

:: SPECIFICATIONS

- . Width : 54"
- . Nominal total thickness: .036 gauge  
Standard weight: 21 oz / linear yard
- . Content: Face: 100% polyurethane  
Back: 100% reinforced Pollex
- . Roll Roll Length: 50 yards

:: FLAMMABILITY REQUIREMENTS\*

- . FMVSS-302
- . CA Bulletin 117 Class 1
- . UFAC - Class 1
- . NFPA 260 - Class 1
- . BIFMA - Class A
- . IMO A.652(16) 8.2
- . Can be treated to meet FAR Specifications
- \*This term and any other corresponding data refer to typical performance in the tests indicated and should not be construed to imply the behavior of this or any other material under actual fire conditions.

:: CARE & CLEANING

- . General Care: While this product is inherently stain resistant, it is important to keep it clean at all times to maintain the original look and the rich feel.
- . Stain Removal: Spot cleaning with soap and water will remove most of the everyday stains without leaving any stain of color behind. Tough, stubborn stains can be removed by a mild cleaning fluid followed by clean water rinse.

:: REVOLUTION IN FAUX LEATHER LUXURY

- . Nature friendly, PVC free product.
- . Contains no volatile compounds which are found in most vinyl-based products.
- . Supple leather touch with exceptional strength and performance.
- . Controlled 4-way stretch for excellent tailorability.

:: GENERAL CHARACTERISTICS

- . Superior wear resistance (ASTM D3597 Wyzenbeek) Exceeds 100,000 double rubs by wire screen
- . Colorfastness to light (AATCC-16/400 hours)
- . Colorfastness to cracking (AATCC-8/passes)
- . Colorfastness to chlorine bleach (AATCC-3) passes 1:10 & 1:5 bleach dilution test
- . Yarn slippage (ASTM D4034/passes)
- . Excellent breaking strength (ASTM D5034)
- . Excellent tear strength (ASTM D2262)
- . Cold crack resistant
- . Mildew resistant backing

:: SUITABLE APPLICATIONS

- . Contract interiors
- . Office
- . Restaurant
- . Hospitality
- . Healthcare
- . RV/Marine Interiors



FLOCK TEX, Inc.  
200 Founders Dr.  
Woonsocket, RI 02895  
Tel: 401.765.2340  
Fax: 401.765.4915  
Toll Free: 800.556.7286  
[www.flocktex.com](http://www.flocktex.com)