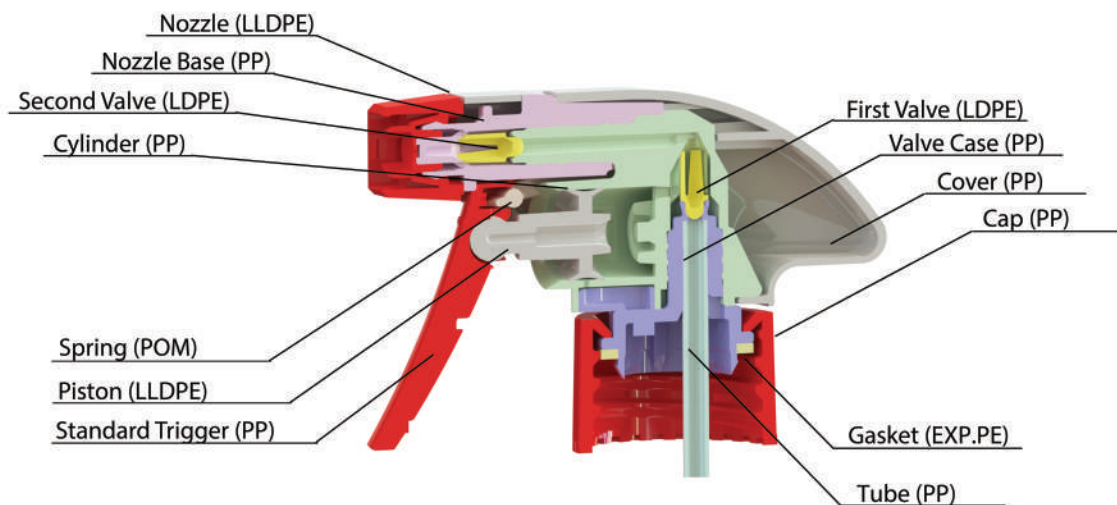


Technical information: For T95 and Arata

Certification	Child Resistant ISO 8317 certified
Trigger Actuation Force	Approx. 21.1KgF with water 11.2KgF without water
Output	1cc output (1ml)
Spray Angle	Standard: 48.6°±10°
Endurance	Minimum 10,000 trigger pulls (water)
Spray Pattern	Standard: φ180mm ± 40mm (at 200mm distance)



We care for markets worldwide

We are experienced in dealing with a wide range of markets all over the world. We can provide helpful advice regarding choice and specification of sprayers to suit your needs. We can also carry out in house chemical compatibility and function testing on your behalf.



Household



Automotive



Garden



Animal Health



Pharmaceutical



Professional

We provide the best custom solutions

We have established a centre of excellence unlike anything else in Europe. We have a well-equipped R&D department and laboratory at your service. Our products are designed and tested in house and we are constantly developing and improving to meet customer demand.

We have facilities for CAD, mould design, finite element analysis, polymer and rapid prototyping. Working alongside the Polymer Processing Research Centre at Queen's University in Belfast, and the Northern Ireland Polymers Association (NIPA), we can provide the best solutions for our customers' needs.

Please get in touch, we would love to help

Canyon Europe Ltd.
4 Mallusk Road,
Newtownabbey,
County Antrim,
BT36 4PR,
Northern Ireland, UK

TEL: +44 (0) 28 9084 1917 FAX: +44 (0) 28 9084 4528

www.canyoneurope.com

canyoneurope.com

@triggersprayers

Canyon-Europe

/+Canyoneurope

/CanyonEurope

C **Canyon**
EUROPE

CONSUMER SPRAYERS





T95

"Canyon Europe's classic and most popular trigger sprayer. The T95 is world renowned for its durability, quality and functional performance."

Arata

"Arata means 'new' in Japanese. This new style introduces a sleek and ergonomic trigger sprayer. The Arata stands out on the shelf with its curvaceous, highly attractive design."



T95 & Arata are highly customisable. Choose from a wide range of options to create a trigger sprayer unique to your brand and requirements.



Highly durable - these trigger sprayers can withstand 10,000+ continuous trigger strokes.



All Canyon Europe trigger sprayers are continuously tested & inspected throughout the production process to ensure excellent quality.



Lightest trigger pull force of any trigger sprayers on the market. Prevents fatigue during extended use.



Canyon Europe is committed to offsetting its carbon footprint. The T95 and Arata are both made from 100% recyclable plastic components.



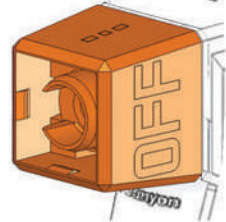
An eye catching modern design which stands out on the shelf; colour matching services are also available.

Customise your T95 or Arata trigger sprayer

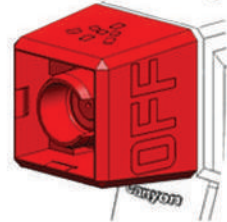
Contact our team for assistance in choosing options



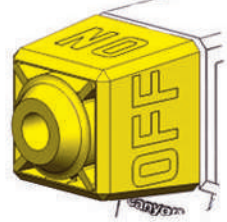
On/Off Nozzle
This nozzle allows the user to turn the nozzle off when not in use to prevent drips during storage or transport.



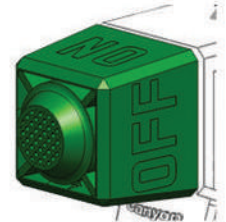
Spray/Jet Nozzle
A dual function nozzle which allows the user to choose wide spray or narrow jet to suit each application.



Fine Mist Nozzle
Provides a wider pattern with fine droplet size (D 94.28 microns). Great for air and fabric care.



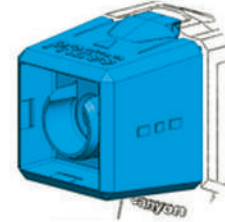
Sunstar Foamer
Produces a fine film of foam with a wide spray pattern, used for glass and shower cleaners.



Plastic Mesh Foamer
Produces a foam with a concentrated spray pattern, useful for products such as oven cleaner.



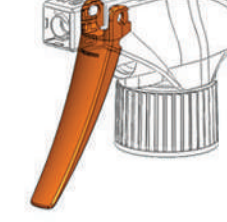
Woven Mesh Foamer
Produces a high quality thick foam with plenty of body.



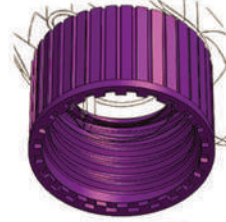
Child Resistant
When used along with the locking cap option the trigger sprayer complies with ISO8317 Child Resistant Closures.



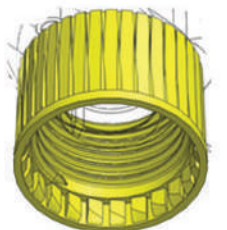
Standard Trigger
Enables the use of two fingers when using the trigger sprayer. Allows for maximum packing space on the shelf as the trigger lies within the bottle silhouette.



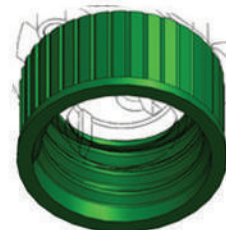
Long Trigger
Enables the use of three fingers, reducing hand fatigue when using greater quantities of liquid. Especially useful for garden care.



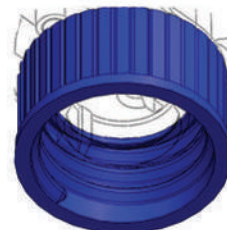
C Cap
Standard 28/410 screw cap. The most common cap used in Europe.



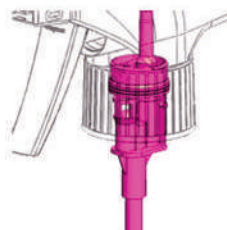
L Cap
A 28/400 anti-back off ratchet cap. When used with CRC nozzle, sprayer is ISO8317 certified.



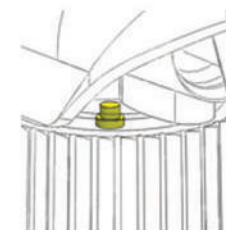
A Cap
28/400 screw cap, the most common type of cap used in North America.



H Cap
28/400 screw cap, mainly used for shorter bottle necks in Europe.



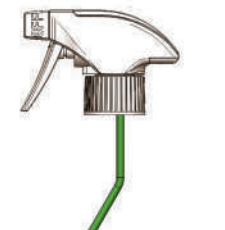
Upside Down Valve
With an upside down valve, the sprayer can be used in any direction and without a tube.



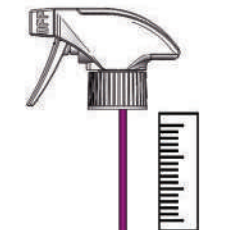
Venting Membrane
Membrane allows gas to escape from the bottle preventing collapse.



Custom Branding
Custom label design and application. We can also in-mould your logo to form a raised design on the cover.



Bent Tube
Bent tubes to fit unusual container shapes or provide improved bottle drainage.



Tube Sizes
Tube sizes can be adjusted to suit your bottle. We offer high stiff tubes if required.



Colour
Any colour options you require to match your branding and stand out on the shelf.



Flexible tube
Adding a cone fitting to the flexible tube allows it to be used with a wide variety of containers. 38mm screw cap also available.