

# MayPak

美派包装



[www.chinacosmeticpacking.com](http://www.chinacosmeticpacking.com)



[www.maypakcn.com](http://www.maypakcn.com)



*Worldwide Marketing & Sales*

## **MAYPAK PACKAGING CO.,LTD.**

Add:33shiji Rd,Mazhu Developing Zone,  
Yuyao 315400,Zhejiang,China.

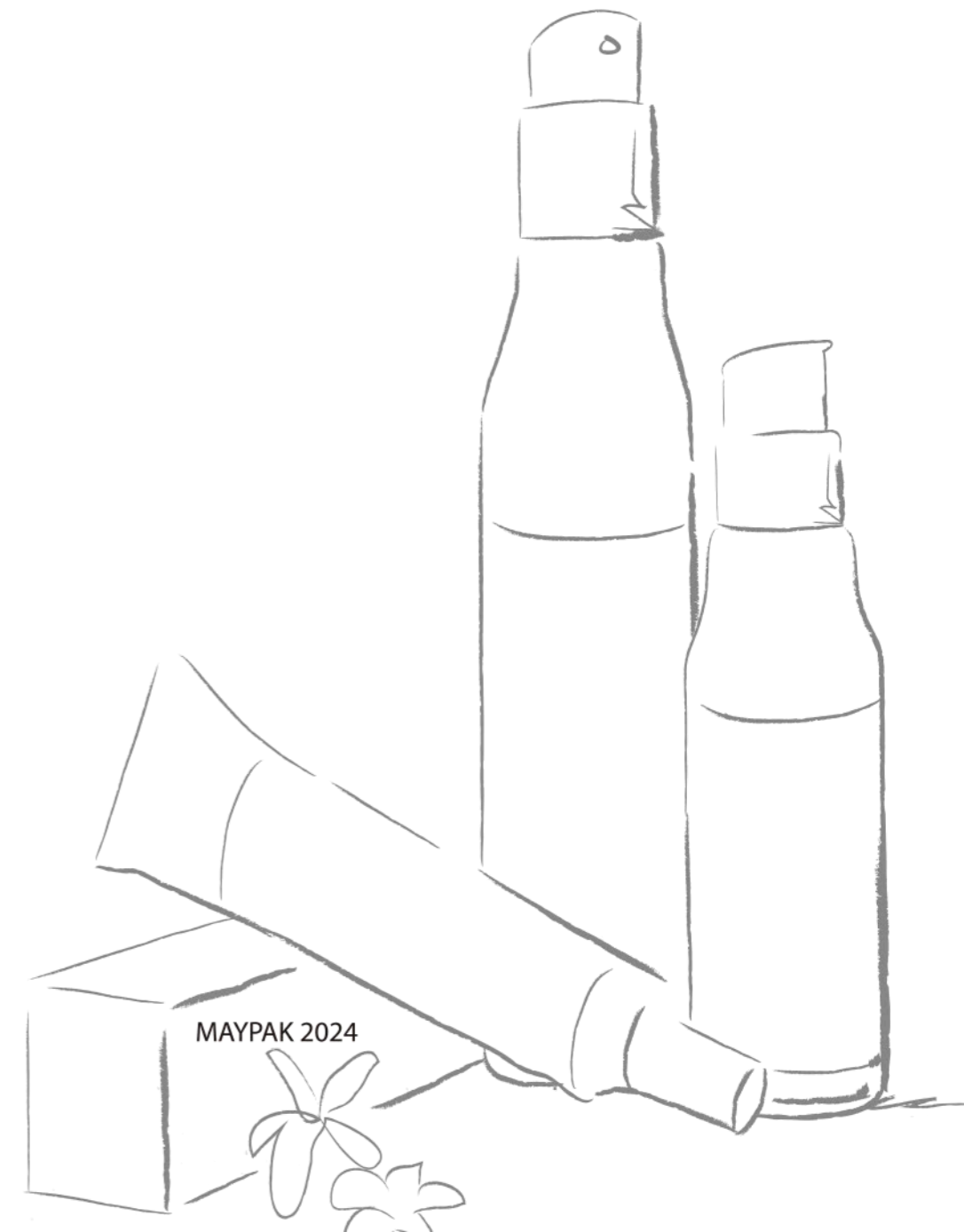
Tel:0086-574-62790606  
Cell No.:0086-18657435151  
Fax:0086-574-62790909  
E-mail:sales@maypakcn.com  
Http://www.maypakcn.com

*Manufacturing Facility In Ningbo China*

## **YUYAO S&M PACKAGING CO.,LTD.**

Add:10 th Fangye Rd, Yangming Subdistrict,  
Yuyao, Ningbo, Zhejiang Province,China

Tel:0086-574-62795578  
Cell No.:0086-13958350674  
Fax:0086-574-62790909  
E-mail:sales@smcospack.com



更优质，更专业，  
更快捷

## SERVICE NETWORK

MAYPAK的每一件产品，  
都是美派团队用心凝聚的结晶；  
我们用创新的设计理念，  
高科技的生产设备，  
专业的服务体系，  
去诠释MAYPAK的态度，  
去诠释每一个人的与众不同！

Yuyao Maypak Packaging Co.,Ltd. designs,develops  
and manufactures plastic and metal spray  
dispensers,packaging for cosmetic,personal care  
and general merchandise industries. Our packaging  
products include plastic and metal fine mist  
sprayers,crimp sprayers,lotion pumps,treatment  
pumps,airless dispensing containers,standard  
triggers,mini trigger sprayers,glass,plastic and  
acrylic bottles, plastic tubes and turned edge boxes.  
We design and produce our own molds with  
customized shapes,sizes,colors and decorations. Our  
innovative designs and superior engineering  
departments can develop new items quickly at  
reasonable prices.



### 2006年

成立欣蒙生产基地以方枪、乳液泵、小喷雾、粉泵、塑料盖等为专业产品，打开了企业稳步发展新篇章。



The base mainly produces trigger sprayers, lotion pumps, fine mist sprayers, treatment pumps and plastic caps. It opens a new chapter to promote the development of firm.

### 2013年



合资成立上海晶逸玻璃有限公司。为进一步拓展企业规模，强强联手，跨越发展的思路使得企业的品牌不断延伸和充实。

In 2013, Shanghai JingYi Glass co.,Ltd.was formed as a joint venture, In order to further expand the scale of enterprises, join forces and increase development ideas made the firm's brand continue extending and enriching.

### 2021年

欣蒙生产基地和彩韵研发基地合并。整合优势资源，助力产业发展。

Integrated to promote a better all around Company.



### 2011年



成立美派营销中心。公司实施“质量塑造品牌，科技推动发展、服务赢得市场、文化回报社会”等战略，经过“VI设计竖形象、技术创新显实力、完善服务传品牌、和谐发展固根基”等运作,使企业稳步发展，为打造一个化妆品包材巨人奠定了基础。

Through the operation of "VI design,scientific and technological innovation,improvement of brand service,harmonious development of solid foundation", the firm made steady progress and laid the foundation for the development of a cosmetics packaging giant.

### 2016年



成立彩韵研发中心。人才的吸引、技术的革新，发展为日用品类、护肤类、彩妆类等并举的生产研发大格局。

In 2016, CY center was established. Talent and technological innovation deeply strengthened the development of many categories, skin care, make-up and other concurrent large-scale production. It enhanced the firm to draw a competitive big picture.

# 显著的产品表现力

## SUPERIOR EXPRESSIVENESS

### Silk Screen Printing

We have mastered Silk Screen Printing this is an easy and effective use for design, all done in our own factories with cutting edge technology. Silk Screen printing can provide a powerful visual effect.

### Water Transferring Printing

The water drape film has excellent tension and is easily applied to the product surface to form a graphic layer. The surface develops a distinctly different appearance almost as if it were spray painted. Draping on any shape of a design to solve the problems that come with stereoscopic printing. We have defined ourselves with the appearances of fine wood caps such as bamboo using this method.

### Plating

Special metal aluminum is vacuumed with evaporation to adhere a metalized look to the products. Electroplating can improve the sense of quality and unusual feelings, again allowing your packaging to stand out amongst the others.

### Frosting

To achieve the look of a matte, frosted appearance, a glass container is immersed in hydrofluoric acid/fluoride compounds. During this process, small bits of the glass surface are removed. This, in effect, leaves a surface that diffuses the light, giving a "frosted" appearance. Frosting can be applied to an entire container or used to create a design.

### Aluminum

The product appearance is bright silver. Its full body shows metallic luster and texture. This craft can effectively highlight the packaging quality and play a major part in effect.

### Frosting

Bamboo is renewable resources with low-carbon, environmental, and degradable characteristics. Bamboo products, as the carrier of bamboo culture and environmental protection are favored by more customers.

Maypak advises on the process, product ability and its related accessory to manufacture different colors, textures and appearances so your products will stand out.



With decades of experience behind us we can improve your COG, ROI and support your ongoing product needs and requirements.

# 包装全案解决方案

## THREE SOLUTIONS

为了满足客户的多样化需求，美派为我们的客户精心准备定制需求。使用美派广泛的模具，您可以实现低成本而不牺牲效率。丰富多彩的功能性加工与艺术设计将标准产品转换为您想要的外观和质感。定制模具，达到客户设计和产品也是一种选择。我们设计和生产高品质的包装。

In order to meet the diverse needs of our customers, Maypak carefully prepares customized requirements for our customers. Using Maypak extensive molds you can achieve low cost without sacrificing efficiencies. Colorful and functional processing and art design transforms the standard products to your desired look and feel. Customization of molds to reach customers' visions of design and product is always an option. We design and produce quality packaging.

01

### STANDARD

#### 美派公模

We have a wide range of mold types to help you achieve high efficiencies and new product development little to no investment. Maypak considers the functionality of the product as well as convenience of use. We have developed thousands of models of bottles, jars, caps, pumps and sprayers including additional accessories. Development of new products has been complicated in the past, causing problems affecting production time, budgets and minimum production quantity. Issues such as these are easily solved easily by using Maypak's current extensive offerings.

02

### CUSTOMIZED

#### 个性化定制

From simple low-cost products to decorative sophisticated high-end products, Maypak does it all and will manage the process from start to finish.

03

### CUSTOM

#### 美派私模

Our mission is to execute the customer's idea of appearance, function and quality. Utilizing a combined 80 years of operations experience you already are ahead of the game.

# CONTENTS

## 目录

余姚市美派包装有限公司  
Yuyao Maypak Packaging Co., Ltd.

P.06—P.19



真空瓶  
Airless Bottles

P.20—P.26



可替换容器 / 乳液瓶  
Refillable Containers /  
Lotion Bottles

P.27—P.31



双管 / 眼霜管  
Dual Tube Bottles /  
Eye Cream Bottles

P.32—P.42



膏霜盒 / 化妆笔  
Cream Jars / Cosmetic Pens

P.43—P.47



滚珠瓶 / 膏体管  
Roll on Bottles / Deodorant Sticks

P.48—P.56



玻璃瓶 / 滴管 / 烟草瓶  
Glass Bottles / Essential Oil Droppers /  
Glass Weed Bottle with CRC

P.57—P.63



塑料瓶  
Plastic Bottles

P.64—P.70



铝瓶 / 塑料管  
Aluminum Bottles /  
Plastic Tubes

P.71—P.73



口红管  
Lipstick Containers

# MP51-52

## Airless Bottles

真空瓶

MP5299

35ml / 50ml / 75ml / 100ml / 150ml



## AIRLESS BOTTLES / 真空瓶

MP5102



Capacity	H(mm)	D(mm)	Material
15ml	77.1	35.0	Dosage:1.0cc Material:PP Dosage:0.25cc
30ml	98.3	35.0	
50ml	124.8	35.0	

MP5105



Capacity	H(mm)	D(mm)	Material
30ml	107.0	45.0x31.0	PP
50ml	127.0	45.0x31.0	

MP5106



Capacity	H(mm)	D(mm)	Material
15ml	91.0	29.0	PP
30ml	118.0	29.0	
50ml	156.0	29.0	

MP5107



Capacity	H(mm)	D(mm)	Material
15ml	98.0	32.8	PP
30ml	118.0	32.8	
50ml	151.0	32.8	

MP5130



Capacity	H(mm)	D(mm)	Material
150ml	149.0	55.0	PP
200ml	173.0	55.0	
250ml	198.0	55.0	

MP5158



Capacity	H(mm)	D(mm)	Material
30ml	103.0	36.0	PP
50ml	122.0	36.0	



**MP5108**



Capacity	H(mm)	D(mm)	Material
30ml	82.0	45.0	Bottle Body:PP
50ml	99.0	45.0	
80ml	121.0	45.0	Cap:PP
100ml	138.0	45.0	
120ml	150.0	45.0	
150ml	182.0	45.0	
200ml	217.0	45.0	

**MP5298**



Capacity	H(mm)	D(mm)	Material
30ml	84.0	48.0	PP
50ml	93.0	48.0	
75ml	109.4	48.0	
100ml	125.6	48.0	
150ml	160.0	48.0	

**MP5157**



Capacity	H(mm)	D(mm)
50ml	96.2	49.0
80ml	99.0	49.0
100ml	129.7	49.0
120ml	148.6	49.0
150ml	162.8	49.0

**Material**  
Bottle Body:PP  
Cap:PP



**MP5299**

*All Plastic  
Silicone Spring*



Capacity	H(mm)	D(mm)	Material
35ml	84.0	48.0	PP
50ml	93.0	48.0	
75ml	109.4	48.0	
100ml	125.6	48.0	
150ml	160.0	48.0	

**MP51001**



Capacity	H(mm)	D(mm)	Material
35ml	93.0	47.0	PP
50ml	108.0	47.0	
80ml	128.0	47.0	
100ml	145.0	47.0	
120ml	159.0	47.0	
150ml	182.0	47.0	

MP5165



Capacity	H(mm)	D(mm)	Material
30ml	92.0	37.0	PP
50ml	118.0	37.0	
75ml	148.0	37.0	
100ml	170.0	37.0	

MP5198



Capacity	H(mm)	D(mm)	Material
15ml	89.0	29.0	PP
20ml	95.0	32.0	
30ml	110.0	32.0	
50ml	141.0	32.0	
80ml	140.0	39.0	
100ml	159.0	39.0	

MP5215



Capacity	H(mm)	D(mm)	Material
30ml	92.0	37.0	PP
50ml	118.0	37.0	
75ml	148.0	37.0	
100ml	170.0	37.0	

MP5240



Capacity	H(mm)	D(mm)	Material
20ml	99.0	32.0	PP
30ml	114.0	32.0	
40ml	129.0	32.0	
50ml	145.0	32.0	

MP5250



Capacity	H(mm)	D(mm)	Material
50ml	100	57.8x44.6	PP
80ml	118.2	57.8x44.6	
100ml	130.3	57.8x44.6	
120ml	142.2	57.8x44.6	

MP5253



Capacity	H(mm)	D(mm)	Material
20ml	95.0	32.0	PP
30ml	110.0	32.0	
40ml	126.0	32.0	
50ml	141.0	32.0	

MP5216



Capacity	H(mm)	D(mm)	Material
15ml	96.0	31.0	PP,AS
30ml	124.0	31.0	
50ml	162.0	31.0	

MP5224



Capacity	H(mm)	D(mm)	Material
15ml	83.0	30.0	PP
30ml	111.0	30.0	
50ml	150.3	30.0	

MP5227



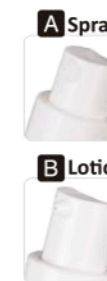
Capacity	H(mm)	D(mm)	Material
5ml	65.0	25.0	PP
10ml	77.0	25.0	
15ml	92.0	25.0	
25ml	118.0	25.0	

MP5256



Capacity	H(mm)	D(mm)	Material
5ml	61.0	23.0	PP
10ml	76.4	23.0	
15ml	91.9	23.0	

MP51002



Capacity	H(mm)	D(mm)	Material
15ml	105.3	32.0	PP
30ml	123.7	32.0	
50ml	162.0	32.0	

MP51003



Capacity	H(mm)	D(mm)	Material
15ml	90.0	36.0	Cap: AS Bottle Body: PP
30ml	111.0	36.0	
50ml	136.0	36.0	

MP51004



Capacity	H(mm)	D(mm)	Material
15ml	90.0	30.0	PP
30ml	118.8	30.0	
50ml	147.0	30.0	

MP51018



Capacity	H(mm)	D(mm)	Material
30ml	94.0	49.0	PP
50ml	108.0	49.0	

MP5109



Capacity	H(mm)	D(mm)	Material
5ml	77.0	19.0	AS
10ml	98.0	19.0	
12ml	112.0	19.0	
15ml	127.0	19.0	

MP5128



Capacity	H(mm)	D(mm)	Material
15ml	84.0	39.0	Bottle Body:AS Cap:AS Inner Bottle:PP
30ml	110.0	39.0	
50ml	140.0	39.0	

MP5131-1



Capacity	H(mm)	D(mm)	Material
50ml	108.0	51.0	AS,PP
80ml	132.0	51.0	
120ml	160.0	51.0	
150ml	193.0	51.0	

MP5135



Capacity	H(mm)	D(mm)	Material
15ml	89.0	31.0	AS
20ml	99.0	31.0	
30ml	119.0	31.0	

MP5111



Capacity	H(mm)	D(mm)	Material
15ml	94.0	34.0	Bottle Body:AS Cap:PP
30ml	113.0	34.0	
50ml	143.0	34.0	

MP51009



Capacity	H(mm)	D(mm)	Material
10ml	84.0	26.5	AS
15ml	99.3	26.5	
20ml	114.0	26.5	
30ml	144.0	26.5	

Capacity	H(mm)	D(mm)	Material
50ml	117.0	41.0	AS
80ml	148.0	41.0	
100ml	168.0	41.0	

MP5141



Capacity	H(mm)	D(mm)	Material
15ml	110.0	27.5	Dosage:0.25cc Material:AS Aluminium
30ml	124.0	33.5	
50ml	155.0	33.5	
80ml	154.0	41.0	
100ml	175.0	41.0	
120ml	195.0	41.0	



Capacity	H(mm)	D(mm)	Material
15ml	95.0	33.0	AS,PP
30ml	118.0	33.0	
50ml	148.0	33.0	
80ml	153.0	40.0	
100ml	173.0	40.0	
120ml	196.0	40.0	
200ml	215.0	50.0	



MP5225



MP5252-A



Capacity	H(mm)	D(mm)	Material
50ml	108.5	48.0	AS
100ml	145.0	48.0	
130ml	166.0	48.0	
150ml	180.5	48.0	

MP5252-B



Capacity	H(mm)	D(mm)	Material
50ml	118.5	48.0	AS
80ml	146.0	48.0	
120ml	182.0	48.0	

MP51005



Capacity	H(mm)	D(mm)	Material
5ml	96.0	28.5	AS
10ml	111.4	28.5	
15ml	128.0	28.5	
20ml	161.0	28.5	

MP51006



MP5249 MP51007 MP51008

Capacity	H(mm)	D(mm)	Material
15ml	103.0	33.0	AS
30ml	122.0	33.0	
50ml	139.7	33.0	
80ml	157.0	41.0	
100ml	177.0	41.0	
120ml	197.0	41.0	

MP51019

Capacity	H(mm)	D(mm)	Material
15ml -Airless	90.6	40.0	AS
30ml -Airless	107.0	40.0	
50ml -Airless	128.0	40.0	
120ml -Lotion	150.0	51.0	
5g	36.8	38.0	Jar:Acrylic
15g	46.0	51.0	
30g	56.0	61.8	
50g	63.0	69.0	



MP51020



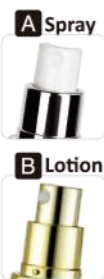
Capacity	H(mm)	D(mm)	Material
15ml -Airless	85.0	40.0	AS
30ml -Airless	102.0	40.0	
50ml -Airless	122.0	40.0	
120ml -Lotion	164.0	46.0	Jar:Acrylic
15g	44.0	54.0	
30g	53.0	63.0	
50g	60.0	70.0	

MP5119



Capacity	H(mm)	D(mm)	Material	Capacity	H(mm)	D(mm)	Material
15ml	100.3	38.0x38.0	Bottle Body: Acrylic Collar:ABS Inner Bottle:PP Activator:ABS	15g	33.0	58.6x58.6	Jar:Acrylic Disc:PE Inner Cap/Jar:PP Cap:Acrylic
30ml	129.2	38.0x38.0					
50ml	166.7	38.0x38.0					
100ml	187.0	42.9x42.9					
				30g	38.5	58.6x58.6	
				50g	50.5	68.5x68.5	
				80g	62.0	68.5x68.5	

MP5115



Capacity	H(mm)	D(mm)	Material
10ml	95.0	30.0	SAN ABS
15ml	113.0	30.0	
20ml	127.0	30.0	
30ml	161.0	30.0	
35ml	175.0	30.0	

MP5118



Capacity	H(mm)	D(mm)	Material
15ml	98.0	40.0	Bottle Body:MS Inner Bottle:PP
30ml	131.0	40.0	
40ml	148.0	40.0	

MP5128



Capacity	H(mm)	D(mm)	Material
15ml	95.0	36.0	Bottle Body:AS
30ml	122.0	36.0	Inner Bottle:PP
50ml	161.0	36.0	Pump:ABS

MP5152



Capacity	H(mm)	D(mm)	Material
15ml	95.0	36.0x36.0	Bottle Body: Acrylic Inner Bottle:PP Activator/Lid:ABS
30ml	123.0	36.0x36.0	
50ml	161.0	36.0x36.0	

MP5153



Capacity	H(mm)	D(mm)	Material
15ml	87.0	40.0	ABS,PP, PMMA
30ml	112.0	40.0	
50ml	145.0	40.0	

MP5155



Capacity	H(mm)	D(mm)	Material
30ml	93.5	42.5	ABS,PP,
50ml	118.0	42.5	ACRYLIC

MP5173



Capacity	H(mm)	D(mm)	Material
30g	156.0	32.0x43.0	Acrylic PP
40g	156.0	32.0x43.0	
50g	156.0	32.0x43.0	
75g	173.0	32.0x43.0	

MP5183



Capacity	H(mm)	D(mm)	Material
30ml	128.3	39.2	ABS
40ml	146.7	39.2	
50ml	157.3	39.2	Acrylic
30g	70.5	60.6	
50g	70.5	60.6	

MP5208



Capacity	H(mm)	D(mm)	Material
15ml	102.0	34.0	ABS
30ml	141.0	34.0	Acrylic
60ml	153.0	40.0	PP
120ml	180.0	48.0	

MP5220



Capacity	H(mm)	D(mm)	Material
15ml	91.5	40.0	ABS,PP PMMA,PE
30ml	116.5	40.0	
50ml	150.0	40.0	
100ml	176.0	48.0	
120ml	191.5	48.0	

MP5251



Capacity	H(mm)	D(mm)	Material
15g/20g	56.0	62.0	ABS,PP
30g	62.0	62.0	PMMA,PE
50g	69.0	70.0	
30ml	128.8x60.0	123.1	
50ml	128.8x90.5	153.6	ABS
30g	182.0x39.2	66.0	PP,PE
50g	204.0x46.8	76.5	PMMA

MP5210



Capacity	H(mm)	D(mm)	Material
30ml(A/L)	135.0	45.2	ABS
50ml(A/L)	175.0	45.2	PP
100ml(A/L)	175.0	53.0	PMMA
120ml(A/L)	175.0	53.0	

MP5248



Capacity	H(mm)	D(mm)	Material
15g	55.3	56.2	ABS
30g	62.3	56.2	PP
50g	71.8	65.1	PMMA

## AIRLESS JARS / 真空膏霜盒

MP5131-2



Capacity	H(mm)	D(mm)	Material
15g	59.0	56.0	SAN PP ABS
30g	70.0	56.0	
50g	77.0	63.8	

MP6112



Capacity	H(mm)	D(mm)	Material
30g	84.5	67.0	Acrylic, PP

## Refillable Containers

可替换容器

MP51025

30ml / 50ml



## REFILLABLE CONTAINERS / 可替换容器

MP6242



Capacity	H(mm)	D(mm)	Material
50g	52.0	60.0	Acrylic
100g	53.5	73.0	PP
240g	63.0	98.0	ABS

MP6243



Capacity	H(mm)	D(mm)	Material
15g	59.0	55.0	Acrylic
30g	70.5	55.0	PP
50g	75.0	63.0	ABS

MP6245

Capacity	H(mm)	D(mm)	Material
50g	50.0	65.0	PP
100g	55.0	77.0	



MP6251



Capacity	H(mm)	D(mm)	Material
50g	35.0	77.5	ABS

MP6253



Capacity	H(mm)	D(mm)	Material
50g	46.0	63.0	PP
100g	50.0	78.5	
200g	75.5	85.0	

MP51025



Capacity	H(mm)	D(mm)	Material
30ml	118.0	40.0	PET, PP
50ml	152.5	40.0	Aluminum

MP51026



Capacity	H(mm)	D(mm)	Material
15ml	102.1	34.2	Acrylic
30ml	142.0	34.2	PP, PETG

MP51023



Capacity	H(mm)	D(mm)	Material
30ml	121.7	41.0	ABS
50ml	160.0	41.0	PP

MP51024



Capacity	H(mm)	D(mm)	Material
30ml	105.0	42.0	Acrylic
50ml	130.0	42.0	PP

MP51027



Capacity	H(mm)	D(mm)	Material
30ml	112.3	38.0	PP
50ml	143.3	38.0	
100ml	176.0	44.0	

MP51028



Capacity	H(mm)	D(mm)	Material
30ml	119.0	39.0	AS
50ml	111.0	56.0	PP
100ml	164.0	56.0	

LOTION BOTTLES / 乳液瓶

MP51029



Capacity	H(mm)	D(mm)	Material
15ml	90.0	38.0	PP, AS, ABS
30ml	119.0	38.0	
50ml	156.0	38.0	

MP51035



Capacity	H(mm)	D(mm)	Material
30ml	111.5	40.0	PP, ABS
50ml	46.8	40.0	
100ml	178.5	45.5	

MP51037

Capacity	H(mm)	D(mm)
15ml (Lotion)	103.0	31.0
30ml (Lotion)	117.0	36.5
60ml (Lotion)	143.0	40.5
100ml (Lotion)	187.0	45.0
120ml (Water)	170.5	45.0

Material

PP



MP5159



Capacity	H(mm)	D(mm)	Material
15ml	115.0	32.0	Acrylic ABS, PP
A-30ml	142.0	32.0	
B-30ml	131.0	38.0	
50ml	153.0	38.0	
80ml	184.0	42.0	
100ml	184.0	42.0	
120ml	187.0	47.0	

MP51038



Capacity	H(mm)	D(mm)	Material
10ml	117.5	23.6	PETG
15ml	152.0	23.6	

Capacity	H(mm)	D(mm)	Material
15ml	99.0	34.0	PMMA-OUTER
20ml	114.0	34.0	
30ml	125.0	34.0	PP-INNER
50ml	149.0	34.0	ABS, LDPE
100ml	171.0	42.0	
140ml	192.0	47.0	

Capacity	H(mm)	D(mm)	Material
3g	60.0	40.0x40.0	PMMA-OUTER
10g	33.0	46.0x46.0	
15g	46.0	60.0x60.0	PP-INNER
30g	60.0	60.0x60.0	ABS, LDPE
50g	67.0	68.0x68.0	

MP51021

Capacity	H(mm)	D(mm)	Material
15ml	113.0	40.0	Acrylic
30ml	113.0	40.0	
60ml	168.0	40.0	
120ml	199.0	49.0	
15g	49.0	60.7	
30g	49.0	60.7	
50g	52.0	70.0	



MP51022

Capacity	H(mm)	D(mm)	Material
30ml	132.0	42.0	Acrylic
50ml	157.0	42.0	
100ml	185.0	47.5	
15g	49.0	50.0	
30g	55.3	59.5	
50g	62.0	66.3	



# MP51-52

## Dual Tube Bottles

双管

MP5225

15ml × 2 / 30ml × 2



# DUAL TUBE BOTTLES / 双管

MP5244



AIRLESS BOTTLE

Capacity	H(mm)	D(mm)	Material
10mlx2	143.0	30.6	PP
15mlx2	159.0	30.6	

MP5247



AIRLESS BOTTLE

Capacity	H(mm)	D(mm)	Material
7.5mlx2	113.0	28.0x53.0	PP
10mlx2	113.0	28.0x53.0	
15mlx2	147.0	28.0x53.0	
20mlx2	147.0	28.0x53.0	

MP5261



LOTION BOTTLE

Capacity	H(mm)	D(mm)	Material
25mlx2	114.0	38.0x38.0	Bottle Body:PP Cap:K Inner Bottle:PET
40mlx2	141.0	38.0x38.0	

MP5162



LOTION BOTTLE

Capacity	H(mm)	D(mm)	Material
20mlx2	128.0	37.0	Bottle Body:AS Cap:AS Inner Bottle:HDPE
30mlx2	165.0	37.0	

MP51010



AIRLESS BOTTLE

Capacity	H(mm)	D(mm)	Material
15mlx2	120.0	64x38.5	Outer Bottle:AS Cap:AS Inner Bottle:PP
30mlx2	169.0	64x38.5	

MP51011



LOTION BOTTLE

Capacity	H(mm)	D(mm)	Material
20mlx2	129.0	36x42	Bottle Body:AS Cap:AS Inner Bottle:HDPE
30mlx2	168.0	36x42	

MP5126



LOTION BOTTLE

Capacity	H(mm)	D(mm)	Material
10mlx2	122.0	37.0	Bottle Body:MS/AS Cap:AS Inner Bottle:HDPE
20mlx2	126.0	37.0	
30mlx2	163.0	37.0	

MP5137



LOTION BOTTLE

Capacity	H(mm)	D(mm)	Material
45mlx2	135.0	51.0	Bottle Body:AS Cap:AS Inner Bottle:HDPE
65mlx2	163.0	51.0	

MP5144



AIRLESS BOTTLE

Capacity	H(mm)	D(mm)	Material
15mlx2	175.0	37.0	Bottle Body:AS Cap:MS Inner Bottle:PP

MP51012



AIRLESS BOTTLE

Capacity	H(mm)	D(mm)	Material
15mlx2	110.0	41.0	Bottle Body:AS Cap:AS Inner Bottle:PP
25mlx2	150.0	41.0	

MP51013



AIRLESS BOTTLE

Capacity	H(mm)	D(mm)	Material
20ml	129.0	31.0	PP
30ml	149.0	31.0	
40ml	169.0	31.0	

MP5255



AIRLESS BOTTLE

Capacity	H(mm)	D(mm)	Material
5mlx2	89.0	48.0x36.0	AS, PP
10mlx2	114.5	48.0x36.0	
15mlx2	138.0	48.0x36.0	



# EYE CREAM BOTTLES / 眼霜管

MP5103



Capacity	H(mm)	D(mm)	Material
7.5ml	115.0	23.0	Bottle Body:AS Cap:AS Inner Bottle:PP
10ml	130.0	23.0	
15ml	155.0	23.0	

MP5177



Capacity	H(mm)	D(mm)	Material
5ml	120.0	20.1	PPAS PETG
10ml	163.0	20.1	
20ml	187.0	23.6	

MP5199



Capacity	H(mm)	D(mm)	Material
10ml	166.0	25.0	PP,PS

MP51014



Capacity	H(mm)	D(mm)	Material
10ml	167.0	25.3	PS,PP

MP51015



Capacity	H(mm)	D(mm)	Material
15ml	167.0	23.5	PP

MP5204



Capacity	H(mm)	D(mm)	Material
7.5ml	117.0	29.0	Bottle Body:AS Cap:PP Inner Bottle:PP
10ml	130.0	29.0	
15ml	155.0	29.0	

MP5206



Capacity	H(mm)	D(mm)	Material
5ml	122.3	23.6	PS,PP
10ml	148.0	24.0	

MP5284



Capacity	H(mm)	D(mm)	Material
10ml	119.5	23.0	PP PETG
15ml	149.0	23.0	

MP51016

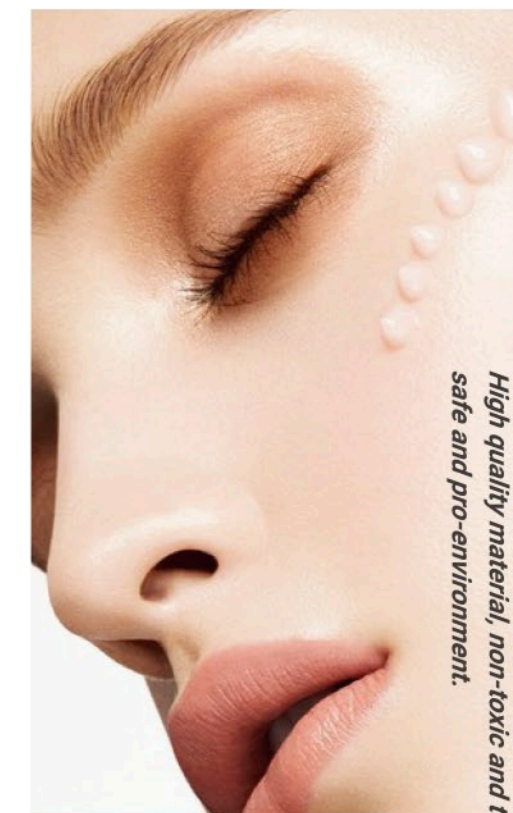


Capacity	H(mm)	D(mm)	Material
5ml	119.0	21.0	PS
10ml	163.0	21.0	

MP51017



Capacity	H(mm)	D(mm)	Material
15ml	108.0	25.1	PS



High quality material, non-toxic and tasteless,  
safe and pro-environment.



# MP61-62

## Cream Jars

膏霜盒



## CREAM JARS / 膏霜盒

MP6211

Double Wall

MP6214



Capacity	H(mm)	D(mm)	Material
30g	60.0	31.0	PP
50g	60.0	31.0	
100g	64.0	73.0	
150g	73.0	85.0	

Capacity	H(mm)	D(mm)	Material
5g	24.0	33.0	PP
10g	29.0	40.5	
20g	33.0	48.0	
30g	40.0	52.0	
50g	49.0	59.0	
80g	55.0	67.0	

Capacity	H(mm)	D(mm)	Material
5g	27.5	33.6	PP
10g	32.5	38.7	
30g	39.5	54.8	
50g	41.6	64.8	
100g	50.6	75.6	
120g	55.8	75.6	

MP6213



MP6215



Capacity	H(mm)	D(mm)	Material
50g	60.0	59.5	PP
150g	70.0	81.0	
250g	79.5	92.5	

MP6216



Capacity	H(mm)	D(mm)	Material
50g	41.0	57.0	PP
100g	54.0	71.0	
150g	67.0	71.0	
200g	87.0	74.0	

MP6222



Capacity	H(mm)	D(mm)	Material
20g	28.0	40.0	PP
50g	43.0	52.0	
100g	50.0	68.0	
150g	64.0	68.0	
250g	67.0	84.0	

MP6225



Capacity	H(mm)	D(mm)	Material
10g	23.0	47.0	PP

MP6217



Capacity	H(mm)	D(mm)	Material
120g	52.3	70.6	PP
200g	51.0	91.4	
240g	51.7	91.6	
300g	70.0	91.8	
500g	82.4	103.0	

MP6218



Capacity	H(mm)	D(mm)	Material
100g	50.5	77.0	PP
160g	50.5	93.0	
200g	50.5	103.0	

MP6226



Capacity	H(mm)	D(mm)	Material
3g	14.0	30.0	PS
5g	20.5	30.0	
10g	22.0	39.0	
15g	29.0	39.0	
20g	34.0	39.0	
25g	34.5	44.0	
30g	39.0	44.0	

MP6248



Capacity	H(mm)	D(mm)	Material
3g	22.0	28.0	PP
5g	25.0	30.0	
10g	28.0	37.0	

MP6115



Capacity	H(mm)	D(mm)	Material
5g	24.5	35.0	ABS/AL PP,PETG
10g	26.0	39.0	
15g	28.0	44.0	
20g	31.0	44.0	
30g	34.0	49.0	
50g	43.0	55.0	
60g	48.0	55.0	
70g	52.0	55.0	
80g	50.0	66.5	
100g	45.0	75.0	
150g	49.0	85.0	
200g	60.0	85.0	
250g	72.0	85.0	

MP6235



MP6250

Thick Wall

Closure	Capacity	H(mm)	D(mm)
Φ47	15g	28.0	50.0
	30g	35.0	50.0
Φ58	30g	30.0	61.0
	50g	44.0	61.0
Φ69	80g	42.0	71.0
	100g	49.0	71.0
	120g	56.0	71.0
Φ76	80g	41.0	79.0
	120g	46.0	79.0
Φ89	150g	52.0	79.0
	200g	61.0	90.0
	300g	80.0	90.0



Refill



Material

PET

Closure	Capacity	Dia	Height	Pcs/ctn(pcs)	Ctn Size(cm)	Material
Φ47	30ml	50mm	36mm	1620	63x40x51	PET
	50ml	50mm	36mm	1080	63x40x51	
Φ56	50ml	60mm	36mm	1008	63x40x51	
	100ml	60mm	61mm	576	63x40x51	
Φ68	200ml	60mm	99mm	360	63x40x51	
	100ml	70mm	42mm	600	63x40x51	
	120ml	70mm	51mm	500	63x40x51	
	150ml	70mm	61mm	400	63x40x51	
	200ml	70mm	71mm	350	63x40x51	
	250ml	70mm	84mm	300	63x40x51	
	300ml	70mm	103mm	250	63x40x51	
	400ml	70mm	129mm	200/264	63x40x51	
Φ89	500ml	70mm	156mm	150/264	63x40x51	
	150ml	90mm	42mm	360	63x40x51	
	250ml	90mm	57mm	270	63x40x51	
	300ml	90mm	67mm	210	63x40x51.5	
	400ml	90mm	82mm	280	76x45x60	
	500ml	90mm	98mm	240	76x45x60	
	600ml	90mm	117mm	200	76x45x60	
	800ml	90mm	143mm	160	76x45x60	
	900ml	90mm	160mm	90/120	76x45x60	
	1000ml	90mm	178mm	120	76x45x60	
Φ83	250ml	85mm	65mm	432	76x45x60	
	350ml	85mm	85mm	336	76x45x60	
	400ml	85mm	97mm	288	76x45x60	
	600ml	85mm	130mm	192	76x45x61	
	1000ml	85mm	200mm	144	76x45x63	

MP6110



Capacity	H(mm)	D(mm)	Material
5g	28.0	34.5	PMMA-OUTER PP-INNER LDPE
10g	33.0	47.0	
15g	35.5	62.2	
30g	42.3	62.2	
50g	49.0	69.7	
100g	65.0	85.0	
150g	73.0	95.0	
200g	85.0	95.0	

LOOSE POWDER JARS / 散粉盒



MP11301

Capacity	H(mm)	D(mm)	Material
3g	22.0	37.0	ABS AS PS
5g	22.0	37.0	
10g	21.0	50.0	
20g	28.0	57.0	
30g	31.0	67.5	

MP10

Cosmetic Pens

化妆笔



# AVAILABLE TIPS

## ORDINARY TIPS



**900**  
1.0ml

Available Tips:  
T1, T2, T12, T17,  
P1, P2

**960**  
1.4ml

Available Tips:  
T1, T2, T4, T11, T12, T13, T17, T18, P1, P2, P3, P4  
P8A, P9A, P10, P13

**L960**  
1.4ml

**C108**  
2.0ml

**LC108**  
2.0ml

**ZG128**  
2.0ml

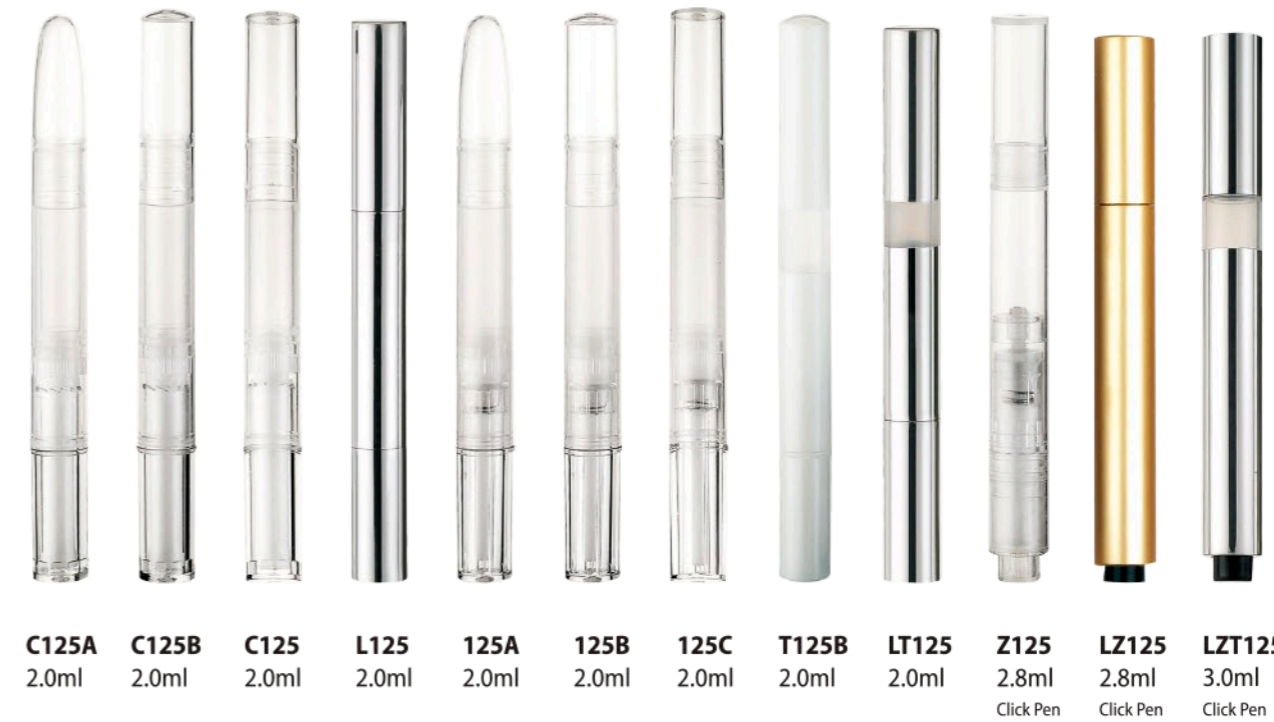
**Z128**  
2.0ml

**C120**  
4.0ml

**LC120**  
4.0ml

Available Tips:  
T1, T2, T4, T11, T12, T13, T17, T18  
P1, P2, P3, P4, P8A, P9A, P10, P13

## ANTI-LEAK TIPS



**C125A**  
2.0ml

**C125B**  
2.0ml

**C125**  
2.0ml

**L125**  
2.0ml

**125A**  
2.0ml

**125B**  
2.0ml

**125C**  
2.0ml

**T125B**  
2.0ml

**LT125**  
2.0ml

**Z125**  
2.8ml  
Click Pen

**LZ125**  
2.8ml  
Click Pen

**LZT125**  
3.0ml  
Click Pen

Available Tips: T1, T2, T4, T11, T12, T13, T17, T18, P1, P2, P3, P4, P8A, P9A, P10, P13

# ROLL ON BOTTLES / 滚珠瓶



**X110**  
3.0ml



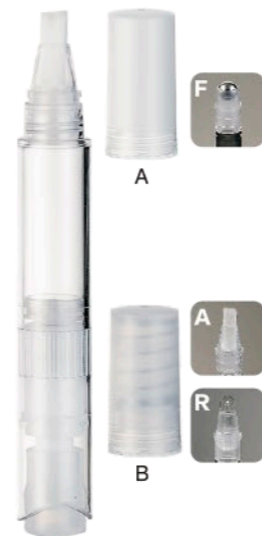
**X135**  
3.0ml



**X133**  
3.0ml



**Z110Z**  
5.0ml



**Z135**  
6.0ml



**MP1105**  
45ml



**MP1106**  
50ml



**MP1109**  
30ml 50ml



**MP1110**  
30ml 40ml



**MP1111**  
50ml



**MP1112**  
50ml



**G130**  
Φ7.0\*H123mm



**Z111B**  
Φ7.0\*H146mm



**Z11B**  
Φ10.0\*H141.7mm



**Z201**  
Φ9.5\*H127.7mm



**Z201-1**  
Φ9.0\*H125mm



**MP1113**  
30ml 120ml



**MP1118**  
60ml 90ml 120ml 180ml



**MP1125**  
50ml



**MP1126**  
50ml



**MP1127**  
70ml



**MP1128**  
50ml

**PETG Roll On Bottle**



**MP1137**  
50ml



**MP1138**  
50ml



**MP1139**  
50ml



**MP1129**  
50ml



**MP1130**  
60ml



**MP1131**  
75ml

**Upside Down Roll On Bottle**



**MP1140**  
75ml



**MP1141**  
75ml



**MP1142**  
75ml



**MP1132**  
50ml



**MP1135**  
30ml 60ml



**MP1136**  
30ml

**Glass Roll On Bottle**



**MP1143**  
45ml 50ml



**MP1145**  
50ml



**MP1146**  
30ml





MP1214  
30g / 50g

Refill



MP1218  
15g / 35g / 50g / 75g

Refill

**MP1212**  
**Refillable Deodorant Sticks**  
可替换膏体管

Eco-Friendly Material PCR

Round Refillable Deodorant Containers in recyclable PCR plastic. Introduce new and innovative packaging materials and scale up new business models, like this reusable and refillable deodorant container.

**DEODORANT STICKS / 膏体管**



MP1203  
15g



MP1207  
7g 15g 30g 50g 75g 90g



MP1208  
15g 40g 50g 75g



MP1211  
15g



MP1212  
25g



MP1213  
25g



MP1215  
20g



MP1216  
45g 75g



MP1217  
45g 75g

# MP21

## High Grade White Porcelain Bottle Sets

瓷白瓶



Opal glass bottles stock & custom designs

更多内容请登录网站:

For more information, please visit:

<http://www.chinaopalglass.com/>



/ 草本系列 / Herb Series



/ 砵喜系列 / YF Series



/ 自然系列 / Nature Series



/ 精油系列 / Essential Oil Series



/ 海洋系列 / Ocean Series

# MP3

## Glass Bottles

玻璃瓶



## GLASS BOTTLES / 玻璃瓶



**MP3101**  
Perfume Rod Applicator Samplers  
(1ml - 5ml)



**MP3102**  
Dropper Assembly Packages with Glass Tubes  
(3ml - 30ml)



**MP3136**  
15ml 20ml 30ml 50ml 80ml 100ml 120ml  
5g 10g 15g 20g 30g 50g



**MP3143**  
30ml 50ml 80ml 100ml

Essential Oil Bottle / MP3104

AMBER AND FLINT BOSTON ROUND BOTTLES

15ml (Φ18/400) 30ml (Φ20/400) 60ml (Φ20/400) 120ml (Φ22/400, Φ24/400) 250ml (Φ24/400) 500ml (Φ28/400)

ESSENTIAL OIL BOTTLES

5ml 10ml 15ml 20ml 30ml 50ml 100ml (Φ18)



Essential Oil Cap / MP3138



Others



Essential Oil Dropper / MP3137

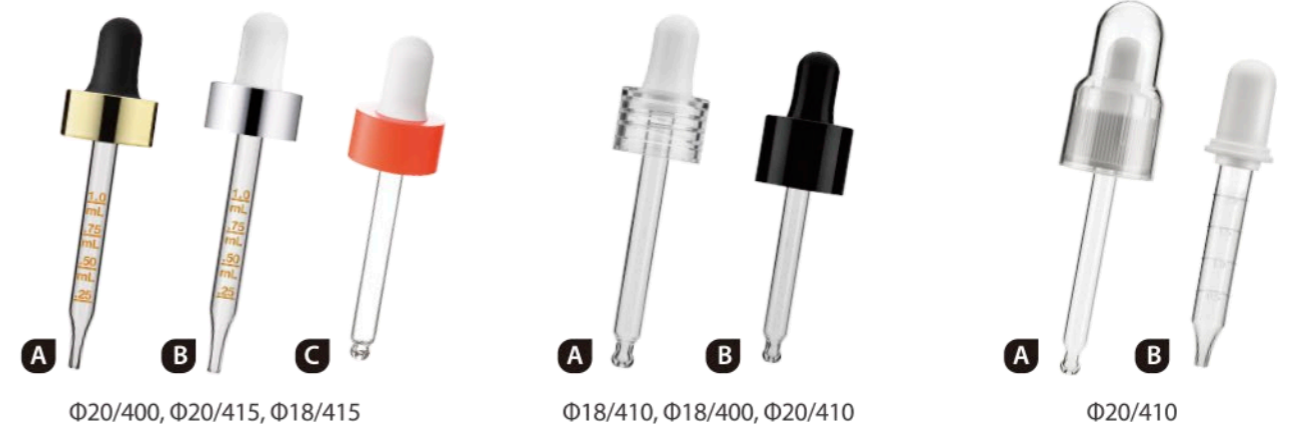
Ordinary



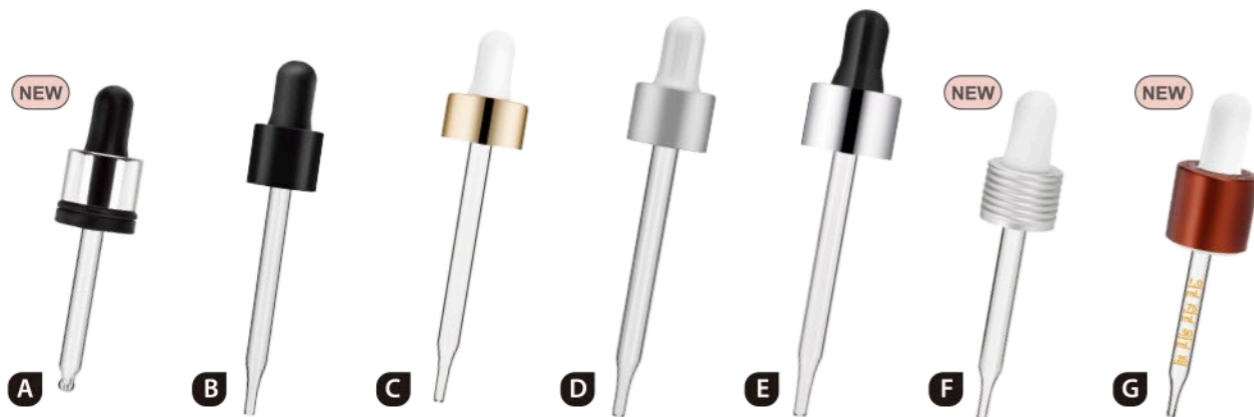
ABS Shell UV Coating

PETG Closure

Others

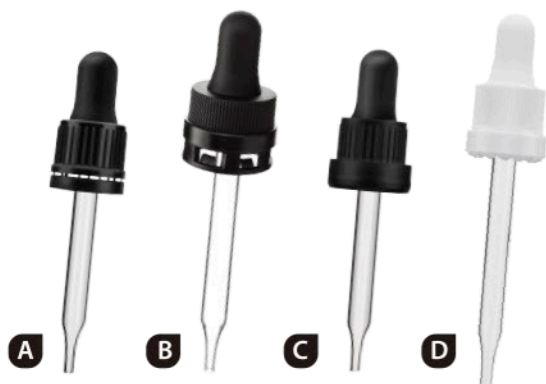


Aluminum Collar



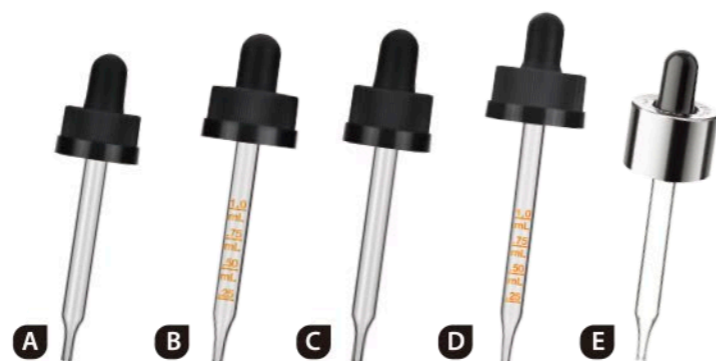
Φ18/400, Φ18/415, Φ20/400, Φ20/410, Φ24/410

Tamper Evident (TE)



Φ18/410

Child Resistant (CR)



Φ18/400, Φ18/415, Φ20/400, Φ22/400, Φ24/400

Tamper Evident & Child Resistant (TE&CR)



Φ18, Φ20

# MP121

## Glass Weed Bottle with CRC

### 烟草瓶

Exquisite controllable leak-proof switch design, to avoid children touch, the use of high safety.



MP12104



Capacity	H(mm)	D(mm)
50g	60.0	53.0
70g	73.0	53.0
110g	102.0	53.0

MP12105



Capacity	H(mm)	D(mm)
110g	80.0	59.0

MP12106



Capacity	H(mm)	D(mm)
30g	43.5	56.0
60g	52.5	56.0
90g	69.0	56.0
120g	80.0	56.0

MP12107



Capacity	H(mm)	D(mm)
70g	57.0	59.5
90g	65.0	59.5
110g	74.0	59.5

MP12108



Capacity	H(mm)	D(mm)
30g	44.0	61.0
60g	59.0	61.0
90g	76.5	61.0

MP12109



Capacity	H(mm)	D(mm)
80g	45.0	74.0
130g	60.0	74.0

# PLASTIC WEED BOTTLE

MP12110



Capacity	H(mm)	D(mm)
5g	31.5	36.0
9g	32.0	36.0

MP12111



Capacity	H(mm)	D(mm)
3g	24.0	41.0
5g	24.0	41.0

MP12101



Capacity	H(mm)	D(mm)
30ml	67.0	25.0
50ml	68.0	32.0
60ml	83.5	32.0
80ml	66.0	39.0
120ml	95.0	39.0
160ml	96.5	45.0
240ml	140.0	45.0

MP12102



Capacity	H(mm)	D(mm)
20ml	44.0	29.0
24ml	36.5	34.0
50ml	70.0	32.5
80ml	70.0	39.0
240ml	135.0	49.0
360ml	77.0	88.0

MP12103



H(mm)	D(mm)
95.0	19.0
110.0	19.0
116.0	19.0
120.0	19.0
150.0	19.0

# MP4

## Plastic Bottles

塑料瓶

MP4113

30ml / 50ml / 60ml  
(D:33.5mm Closure: φ 20)

60ml / 80ml / 100ml / 120ml  
(D:35.5mm Closure: φ 22)



# PLASTIC BOTTLES / 塑料瓶



**MP4113** (Spray & Lotion)  
Material: PET



Capacity:  
30ml 50ml 60ml (D:33.5mm Closure: Ø20)  
60ml 80ml 100ml 120ml (D:35.5mm Closure: Ø22)



**MP4138**  
Capacity: 30ml 50ml 100ml 110ml 120ml 150ml  
Material: PET



**MP4608** (Spray & Lotion)  
Capacity: 30ml 50ml 100ml 120ml 150ml 180ml  
Material: PET



**MP4136**  
Capacity: 100ml 120ml 150ml 200ml  
Material: PET



**MP4137** (Spray & Lotion)  
Capacity: 30ml 60ml 80ml  
Material: PET



**MP4139**  
Capacity: 40ml 60ml 120ml 180ml  
Material: PET



**MP4140**  
Capacity: 100ml 120ml 150ml 200ml  
Material: PET



**MP4141**

Capacity: 60ml 80ml 100ml  
Material: PET



**MP4142**

Capacity: 80ml 100ml 120ml 150ml  
Material: PET

**Sunscreen Bottle Series / 防晒瓶系列 /**



**MP4144**

Capacity: 100ml 120ml 150ml 200ml  
Material: PET

**MP4145**

Capacity: 30ml 50ml 60ml 80ml 100ml 120ml 150ml  
Material: PET

**Capsule Bottle Series / 胶囊瓶系列 /**



**MP4132 (Spray & Lotion)**

Capacity: 40ml 60ml 100ml 120ml 150ml  
Material: PET



**MP4143 (Spray & Lotion)**

Capacity: 50ml 70ml 100ml  
Material: PET



**MP4604 (Spray & Lotion)**

Capacity: 30ml 60ml 80ml 100ml  
Material: PETG



**MP4602**

Capacity: 100ml 150ml 250ml 280ml  
450ml 650ml  
Material: PET / PETG



**MP4603**

Capacity: 250ml 450ml 650ml (Ø43/410)  
Material: PET / PETG



Foaming Dispenser Bottles / 泡沫瓶系列 /



**MP4147**

Capacity: 30ml 60ml 80ml  
Material: PET



**MP4148**

Capacity: 300ml 500ml  
Material: PET / PE

Nail Remover Sets / 卸甲水瓶系列 /



**MP4150**

Capacity: 200ml 300ml 500ml  
Material: PET



**MP4151**

Capacity: 100ml 150ml 180ml 200ml 300ml  
Material: PET



**MP4149**

Capacity: 250ml (Ø40/410)  
Material: PET



**MP4217**

Capacity: 150ml (Ø58mm)  
Material: PE



**MP4215**

Capacity: 50ml 80ml 100ml 150ml 180ml  
200ml 240ml 500ml  
Material: PE



**MP4701**

Capacity: 150ml 200ml  
Material: PP

MP71

## Aluminum Bottles

铝瓶



## ALUMINUM BOTTLES /铝瓶



MP7100 MP7101 MP7102 MP7103 MP7104 MP7105 MP7106 MP7107



MP7108 MP7109 MP7110 MP7111 MP7112 MP7113 MP7114



Φ18/410



Φ20/410



Φ24/410



Φ28/410

Item	Capacity	Mouth Dia(mm)	Bottle Dia	Bottle Height	Pcs/ctn(pcs)	Ctn Size(cm)
MP7100	30ml	Φ20	32mm	76mm	400	35×35×36
MP7101	50ml	Φ24	36mm	83mm	200	39×39×20
MP7102	65ml	Φ24	36mm	94mm	200	39×39×22
MP7103	80ml	Φ24	36mm	106mm	200	39.5×39.5×24
MP7104	100ml	Φ24	40mm	110mm	200	44×44×25
MP7105	120ml	Φ24	45mm	115mm	200	49×49×26
MP7106	150ml	Φ24	45mm	143mm	200	49×49×31
MP7107	200ml	Φ24	50mm	150mm	200	54×54×33
MP7108	250ml	Φ24/28	50mm	174mm	200	54×54×37
MP7109	300ml	Φ24/28	50mm	190mm	200	54×54×40
MP7110	350ml	Φ24	59mm	160mm	120	61.5×37×35
MP7111	250ml	Φ24/28	73mm	104mm	96	62×47×24
MP7112	400ml	Φ24/28	73mm	135mm	48	62×47×17
MP7113	500ml	Φ24/28	73mm	160mm	48	63×47.5×19
MP7114	750ml	Φ24/28	73mm	226mm	48	63×47.5×25



**MP7201**

15g 20g 25g 30g 40g 50g 60g 75g  
80g 100g 150g 200g 250g 350g



**MP7202**

60g 80g 100g 150g



Item	Capacity	Mouth Dia(mm)	Bottle Height
MP7301	30ml	Φ45	60mm
MP7302	50ml	Φ45	70mm
MP7303	65ml	Φ45	80mm
MP7304	100ml	Φ45	110mm
MP7305	150ml	Φ45	140mm
MP7306	200ml	Φ50	150mm
MP7307	250ml	Φ50	170mm
MP7308	300ml	Φ50	190mm
MP7309	350ml	Φ59	160mm
MP7310	500ml	Φ73	180mm
MP7311	1000ml	Φ88	230mm
MP7312	1250ml	Φ88	255mm

Item	Capacity	Bottle Dia(mm)	Bottle Height
MP7501	10ml/15ml	Φ22	58mm
MP7502	18ml/20ml	Φ22	70mm
MP7503	20ml	Φ22	72-75mm
MP7504	25ml	Φ22	80-90mm
MP7505	30ml	Φ25	85mm
MP7506	30ml/35ml	Φ25	100mm
MP7507	30ml/40ml	Φ35	65mm
MP7508	50ml/60ml	Φ35	88mm
MP7509	60ml/70ml	Φ35	100mm
MP7510	75ml/80ml	Φ35	110mm
MP7511	90ml/100ml	Φ35	120mm
MP7512	80ml/90ml	Φ40	100mm
MP7513	100ml	Φ40	110mm
MP7514	120ml	Φ40	120mm
MP7515	150ml	Φ40	140-155mm

# PLASTIC TUBES / 塑料软管



## PBL TUBE / 全塑管

- Better visual impact
- Unbounded originality freedom
- 360°all round seamless design
- Implement on multi-layer barrier web

MP8101



MP8102



MP8103



MP8104



MP8105



MP8106



## ABL TUBE / 铝塑管

- Metallic luster impression
- Unrestricted printing design
- Excellent resistance performance



## ALUMINUM TUBE / 铝管

- Corrosion preventive
- Environmental friendly
- Safe and non-toxic



## SUPER NATURE TUBE & SUGARCANE LDPE TUBE / 纸塑管 & 甘蔗料软管

- Super natural concept
- Unbounded design
- Environmental friendly



# SPECIFICATION / 尺寸参考表

软管尺寸 · 容积参考 Tube Diameter · Fill Capacity

直径mm/D 长度mm/L 容量ml/C	Φ11	Φ13	Φ16	Φ19	Φ22	Φ25	Φ30	Φ35	Φ38	Φ40	Φ45	Φ50	Φ55	Φ60
1	51	40												
3		51	43											
5		65	55											
10				66										
15				85	72									
20				100	85	74								
25				110	100	84								
30					110	94	78							
35						104	85	75						
40						115	92	81						
50						135	106	91						
60							122	102	90					
70							136	112	100	98				
80							150	124	110	106				
90								135	120	114	86			
100								148	130	122	95			
110								162	145	128	102			
120									155	137	110			
130									164	145	115	110		
140									173	154	126	118		
150									181	162	134	120	100	
160										170	142	130	105	
170										178	150	137	110	
180										186	158	143	115	
190											164	149	120	
200											172	156	124	108
210											180	164	127	115
220											190	170	130	120
230												175	137	125
240												180	143	130
250												185	149	135
300													173	150
350													195	162
400													218	175
450														190
500														225

椭圆/超扁软管尺寸 · 容积参考 Oval / Super Oval Tube Diameter · Capacity

直径mm/D 长度mm/L 容量ml/C	Φ25	Φ30	Φ35	Φ40	Φ45	Φ50
30	94	80				
35		90	80			
40		100	88			
50			98			
60			105	100		
70			125	120		
80			135	130	105	
100			143	135	108	
105				145	112	
110				155	120	
120					125	
125						125
140						130

- 软管直径固定，长度可酌量伸减。
- 以上容量表仅做参考，可以根据客户需求在一定范围内做相应调整。
- Tube diameter is set; Length of tube can be customized.
- Specifications are for reference only and customer sizes are available.

# LIPSTICK CONTAINERS / 口红管



**MP11201**  
Size: Φ16.0 × H67.0mm  
Cup Size: Φ12.1mm



**MP11202**  
Size: Φ16.0 × H69.0mm  
Cup Size: Φ12.1mm



**MP11202**  
Size: Φ22.6 × H92.0mm  
Cup Size: Φ12.1mm



**MP11250**  
Size: 19.5 × 12.6 × H67.0mm



**MP11251**  
Size: Φ19.0 × H69.0mm



**MP11252-1**  
Size: Φ41.5 × H43.0mm



**MP11252-2**  
Size: 35.0 × 35.0 × H35.0mm



**MP11252-3**  
Size: Φ40.4 × H41.5mm

# LIP GLOSS CONTAINERS / 唇彩管



**MP11501**

Size: W21.8 × 14.9 × H103.5mm  
Net:6.0ml



**MP11502**

Size: Φ18.7 × H105.5mm  
Net:8.0ml



**MP11503**

Size: Φ24.2 × H62.8mm



**MP11521**

Size: 18.0 × 18.0 × H73.0mm  
Net: 3.3ml  
Material: AS/PETG,ABS,PP



**MP11522**

Size: 20.0 × 20.0 × H99.0mm  
Net: 7ml  
Material: AS/PETG,ABS,PP



**MP11523**

Size: 18.0 × 18.0 × H103.0mm  
Net: 5.4ml  
Material: AS/PETG,ABS,PP



**MP11501**

Size: Φ18.7 × H113.9mm  
Net:8.0ml



**MP11509**

Size: Φ12.7 × H55.4mm  
Net:2.0ml



**MP11510**

Size: Φ16.3 × 14.8 × H76.4mm  
Net:1.5ml



**MP11524**

Size: Φ20.0 × H92.0mm  
Net: 5.2ml  
Material: AS/PETG,ABS,PETG



**MP11525**

Size: Φ18.0 × H109.0mm  
Net: 3.5ml  
Material: AS/PETG,ABS,PP



**MP11526**

Size: Φ13.0 × H135.0mm  
Net: 2.2ml  
Material: AS/PETG,ABS,PP