



# Stock Package Options

Contact us today for a FREE QUOTE  
814.878.4613    [gallab@plastekgroup.com](mailto:gallab@plastekgroup.com)

## Plastek Round Base Jars & Caps

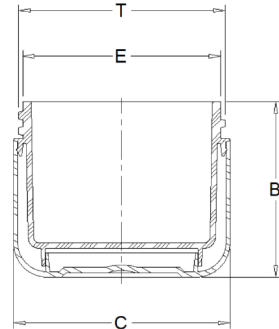
Double wall and single wall, plastic injection molded for cosmetics, creams, lotions and any other general-purpose products. Interior and exterior jars made of polypropylene. Available in .50oz to 8oz capacities. Available in natural and white, custom colored as well. Decoration options available.



### Double Wall Jars – Round Base

#### Technical Information

- Δ Double wall exteriors available in polypropylene, polystyrene & SAN.
- Δ Double wall interiors available in polypropylene only.
- Δ Available finishes: in-mold frost, organic frost, smooth.
- Δ Available decoration: hot-stamp, silkscreen, dry offset, pressure-sensitive label.
- Δ Jar threads conform to SPI standards for a 400-finish neck.



#### Dimensions (Inches)

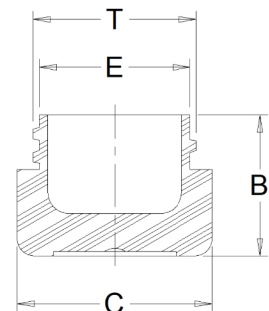
| Fill Weight |      | Jar   |       | Cap Threads   |               | Cap Size | Available Cap Styles |         |         |      |
|-------------|------|-------|-------|---------------|---------------|----------|----------------------|---------|---------|------|
| (Oz.)       | (ML) | B     | C     | T             | E             | (MM)     | Straight             | Classic | Domical | Dome |
| ½           | 14   | 1.290 | 2.045 | 1.870 / 1.840 | 1.76 / 1.746  | 48       | Δ                    | Δ       | Δ       |      |
| 1/2         | 22   | 1.290 | 2.045 | 1.870 / 1.840 | 1.776 / 1.746 | 48       | Δ                    | Δ       | Δ       |      |
| 1           | 36   | 1.600 | 2.160 | 1.968 / 1.933 | 1.874 / 1.839 | 51       | Δ                    | Δ       |         |      |
| 1           | 40   | 1.600 | 2.160 | 2.067 / 2.032 | 1.973 / 1.938 | 53       | Δ                    |         | Δ       | Δ    |
| * 2         | 57   | 1.940 | 2.360 | 2.224 / 2.189 | 2.130 / 2.095 | 58       | Δ                    | Δ       | Δ       | Δ    |
| * 4         | 114  | 2.430 | 2.910 | 2.736 / 2.701 | 2.642 / 2.607 | 70       | Δ                    | Δ       | Δ       | Δ    |
| 8           | 227  | 2.870 | 3.410 | 3.268 / 3.233 | 3.148 / 3.113 | 83       | Δ                    |         |         | Δ    |

\* Available as in-mold frost or polished finish

### Single Wall Jars – Round Base

#### Technical Information

- Δ Single wall jars available in polypropylene, polystyrene & SAN.
- Δ Available finishes: organic frost, smooth.
- Δ Available decoration: hot-stamp, silkscreen, dry offset, pressure-sensitive label.
- Δ Jar threads conform to SPI standards for a 400 finish neck.



#### Dimensions (Inches)

| Fill Weight |      | Jar   |       | Cap Threads |             | Cap Size | Available Cap Styles |         |         |      |
|-------------|------|-------|-------|-------------|-------------|----------|----------------------|---------|---------|------|
| (Oz.)       | (ML) | B     | C     | T           | E           | (MM)     | Straight             | Classic | Domical | Dome |
| ¼           | 7    | 1.030 | 1.430 | 1.265/1.241 | 1.171/1.147 | 33       | Δ                    |         | Δ       |      |



# Stock Package Options

Contact us today for a FREE QUOTE  
814.878.4613 [gallab@plastekgroup.com](mailto:gallab@plastekgroup.com)

## Plastek Jar Caps



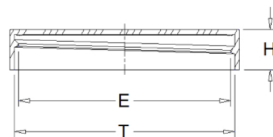
Jar Caps are injection molded closures for any standard Straight – and Round – Base Jars. They are available in stock natural and white but can be custom colored or decorated as required.

### Technical Information

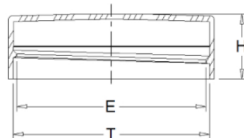
- Δ Assorted liners available for all cap styles.
- Δ Cap threads conform to SPI standards for 400 finish closures.
- Δ Caps are made of polypropylene.
- Δ Caps can be custom hot stamped or silkscreened.
- Δ Stock liner is a standard foam material.
- Δ Custom lining material can be sourced upon request.

### Dimensions (Inches)

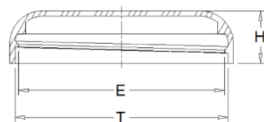
| Cap Size                 | Max. Cap Diameter | Cap Height | Cap Threads   |               |
|--------------------------|-------------------|------------|---------------|---------------|
|                          |                   |            | T             | E             |
| (mm)                     |                   | H          |               |               |
| <b>Straight side Cap</b> |                   |            |               |               |
| 33                       | 1.410             | .458       | 1.287 / 1.266 | 1.193 / 1.172 |
| 48                       | 2.005             | .455       | 1.892 / 1.871 | 1.798 / 1.777 |
| 51                       | 2.070             | .450       | 1.990 / 1.969 | 1.896 / 1.875 |
| 53                       | 2.175             | .450       | 2.089 / 2.068 | 1.995 / 1.974 |
| 58                       | 2.347             | .455       | 2.246 / 2.225 | 2.152 / 2.131 |
| 63                       | 2.585             | .460       | 2.483 / 2.462 | 2.389 / 2.368 |
| 70                       | 2.905             | .480       | 2.758 / 2.737 | 2.664 / 2.643 |
| 75                       | 3.045             | .452       | 2.935 / 2.914 | 2.841 / 2.820 |
| 83                       | 3.410             | .532       | 3.293 / 3.269 | 3.173 / 3.149 |
| <b>Classic Cap</b>       |                   |            |               |               |
| 48                       | 2.010             | .763       | 1.892 / 1.871 | 1.798 / 1.777 |
| 51                       | 2.110             | .820       | 1.990 / 1.969 | 1.896 / 1.875 |
| 58                       | 2.375             | .875       | 2.246 / 2.225 | 2.152 / 2.131 |
| 63                       | 2.600             | .845       | 2.483 / 2.462 | 2.389 / 2.368 |
| 70                       | 2.095             | .925       | 2.758 / 2.737 | 2.664 / 2.643 |
| <b>Dome Cap</b>          |                   |            |               |               |
| 53                       | 2.165             | .675       | 2.089 / 2.068 | 1.995 / 1.974 |
| 58                       | 2.350             | .675       | 2.246 / 2.225 | 2.152 / 2.131 |
| 70                       | 2.895             | .685       | 2.758 / 2.737 | 2.664 / 2.643 |
| 83                       | 3.410             | .875       | 3.293 / 3.269 | 3.173 / 3.149 |
| <b>Domical Cap</b>       |                   |            |               |               |
| 33                       | 1.410             | .560       | 1.287 / 1.266 | 1.193 / 1.172 |
| 48                       | 2.025             | .600       | 1.892 / 1.871 | 1.798 / 1.777 |
| 53                       | 2.175             | .643       | 2.089 / 2.068 | 1.995 / 1.974 |
| 58                       | 2.355             | .640       | 2.246 / 2.225 | 2.152 / 2.131 |
| 70                       | 2.915             | .620       | 2.758 / 2.737 | 2.664 / 2.643 |



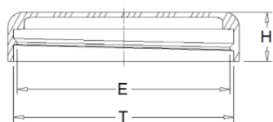
Straightside Cap



Classic Cap



Domed Cap



Domical Cap