



Stock Package Options

Contact us today for a FREE QUOTE
814.878.4613 gallab@plastekgroup.com

Plastek Jar Caps

Jar Caps are injection molded closures for any standard Straight – and Round – Base Jars. The are available in stock natural and white but can be custom colored or decorated as required.

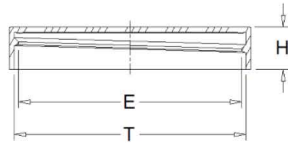
Technical Information

- △ Assorted liners available for all cap styles.
- △ Cap threads conform to SPI standards for 400 finish closures.
- △ Caps are made of polypropylene.
- △ Caps can be custom hot stamped or silkscreened.
- △ Stock liner is a standard foam material.
- △ Custom lining material can be sourced upon request.

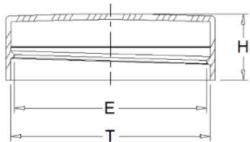


Dimensions (Inches)

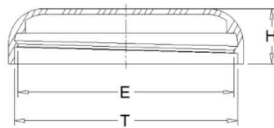
Cap Size (mm)	Max. Cap Diameter	Cap Height H	Cap Threads	
			T	E
Straight side Cap				
33	1.410	.458	1.287 / 1.266	1.193 / 1.172
48	2.005	.455	1.892 / 1.871	1.798 / 1.777
51	2.070	.450	1.990 / 1.969	1.896 / 1.875
53	2.175	.450	2.089 / 2.068	1.995 / 1.974
58	2.347	.455	2.246 / 2.225	2.152 / 2.131
63	2.585	.460	2.483 / 2.462	2.389 / 2.368
70	2.905	.480	2.758 / 2.737	2.664 / 2.643
75	3.045	.452	2.935 / 2.914	2.841 / 2.820
83	3.410	.532	3.293 / 3.269	3.173 / 3.149
Classic Cap				
48	2.010	.763	1.892 / 1.871	1.798 / 1.777
51	2.110	.820	1.990 / 1.969	1.896 / 1.875
58	2.375	.875	2.246 / 2.225	2.152 / 2.131
63	2.600	.845	2.483 / 2.462	2.389 / 2.368
70	2.095	.925	2.758 / 2.737	2.664 / 2.643
Dome Cap				
53	2.165	.675	2.089 / 2.068	1.995 / 1.974
58	2.350	.675	2.246 / 2.225	2.152 / 2.131
70	2.895	.685	2.758 / 2.737	2.664 / 2.643
83	3.410	.875	3.293 / 3.269	3.173 / 3.149
Domical Cap				
33	1.410	.560	1.287 / 1.266	1.193 / 1.172
48	2.025	.600	1.892 / 1.871	1.798 / 1.777
53	2.175	.643	2.089 / 2.068	1.995 / 1.974
58	2.355	.640	2.246 / 2.225	2.152 / 2.131
70	2.915	.620	2.758 / 2.737	2.664 / 2.643



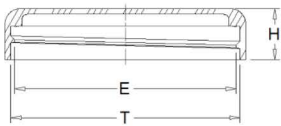
Straightside Cap



Classic Cap



Domed Cap



Domical Cap



Stock Package Options

Contact us today for a FREE QUOTE
814.878.4613 gallab@plastekgroup.com



Plastek Straight Base Jars & Caps

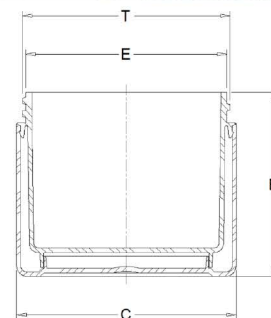
Double wall and single wall, plastic injection molded for cosmetics, creams, lotions and any other general-purpose products. Interior and exterior jars made of polypropylene. Available in quarter ounce to 8oz. capacities. Available in natural and white, custom colored as well. Decoration options available.



Double Wall Jars – Straight Base

Technical Information

- Δ Double wall exteriors available in polypropylene, polystyrene & SAN.
- Δ Double wall interiors available in polypropylene only.
- Δ Available finishes: in-mold frost, organic frost, smooth.
- Δ Available decoration: hot-stamp, silkscreen, dry offset, pressure-sensitive label.
- Δ Jar threads conform to SPI standards for a 400-finish neck.



Dimensions (Inches)

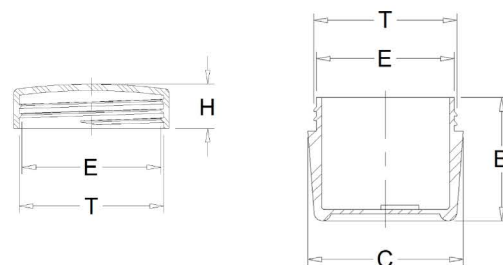
Fill Weight		Jar		Cap Threads		Cap Size	Available Cap Styles			
(Oz.)	(ML)	B	C	T	E	(MM)	Straight	Classic	Domical	Dome
¼	7	1.015	1.420	1.265 / 1.241	1.171 / 1.147	33	Δ		Δ	
* ½	14	1.290	2.045	1.870 / 1.840	1.776 / 1.746	48	Δ	Δ	Δ	
* ½	17	1.290	2.045	1.870 / 1.840	1.776 / 1.746	48	Δ	Δ	Δ	
* 1	36	1.600	2.160	1.968 / 1.933	1.874 / 1.839	51	Δ	Δ		
* 1	40	1.600	2.160	2.067 / 2.032	1.973 / 1.938	53	Δ		Δ	Δ
* 2	57	1.940	2.360	2.224 / 2.189	2.130 / 2.095	58	Δ	Δ	Δ	Δ
3	85	2.235	2.595	2.461 / 2.426	2.367 / 2.332	63	Δ	Δ		
* 4	114	2.430	2.910	2.736 / 2.701	2.642 / 2.607	70	Δ	Δ	Δ	Δ
6	170	2.945	3.075	2.913 / 2.878	2.819 / 2.784	75	Δ			
* 8	227	2.870	3.410	3.268 / 3.233	3.148 / 3.113	83	Δ			Δ

* Available as in-mold frost or polished finish

Single Wall Jars – Straight Base

Technical Information

- Δ Single wall jars available in polypropylene, polystyrene & SAN.
- Δ Available finishes: organic frost, smooth.
- Δ Available decoration: hot-stamp, silkscreen, dry offset, pressure-sensitive label.
- Δ Jar threads conform to SPI standards for a 400-finish neck.



Dimensions (Inches)

Fill Weight		Jar		Cap Threads		Cap Size	Available Cap Styles				
(Oz.)	(ML)	B	C	T	E	(MM)	Straight	Classic	Domical	Dome	
½	15	1.120	1.41	1.290 / 1.270	1.250 / 1.230	33		33 Special cap only			

Website: www.plastekgroup.com

Email: gallab@plastekgroup.com

Phone: 814.878.4613